

**STAR  
WARS**  
THE  
**CLONE  
WARS**

**WIN: DESIGN A NEW VILLAIN!  
AND SEE THEM APPEAR IN THE COMIC STRIP**



**STAR  
WARS**  
M A T H E  
THE  
WARS

**ANAKIN**  
**FACES THE  
DARKNESS  
INSIDE!**



ISSUE 3 • \$4.99  
MAY/APR 2011



# TOP SHOCKS!



## EPISODE 3.15 *Overlords*



### *What happens?*

Our three heroes arrive at the strange and wonderful world of Mortis, a realm hidden within a monolith outside of charted space. There, they discover the Father, Son, and Daughter, a family of impossibly-powerful Force wielders, who can shape themselves and their environment into anything they wish! They have drawn Anakin there because word has reached them of the prophecy concerning him, and his role to bring balance to the Force. Anakin must prove he is the Chosen One, whose destiny is to replace the Father as master of Mortis!

### THE JEDI MEET THE DAUGHTER!



WE ARE THE ONES WHO GUARD THE POWER. WE ARE THE MIDDLE, THE BEGINNING, AND THE END.

1

The true journey begins with the revelation of the three powerful beings guarding the balance of the Force!



### DARK VISIONS!

2

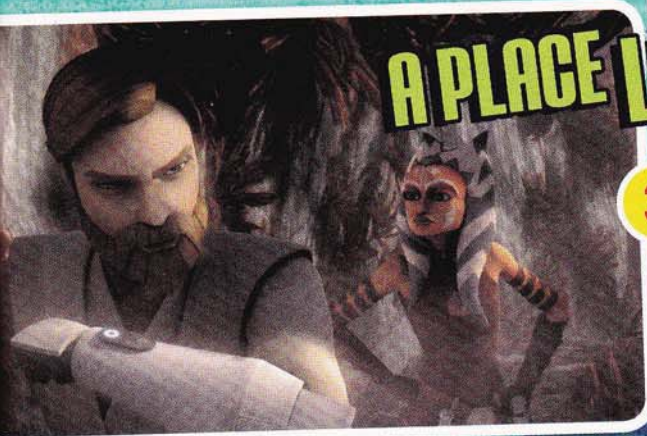
Obi-Wan and Anakin are visited by troubling visions... while Ahsoka receives a dire warning about what they will find on Mortis... and what Mortis will do to them!



WHO'S THERE?!



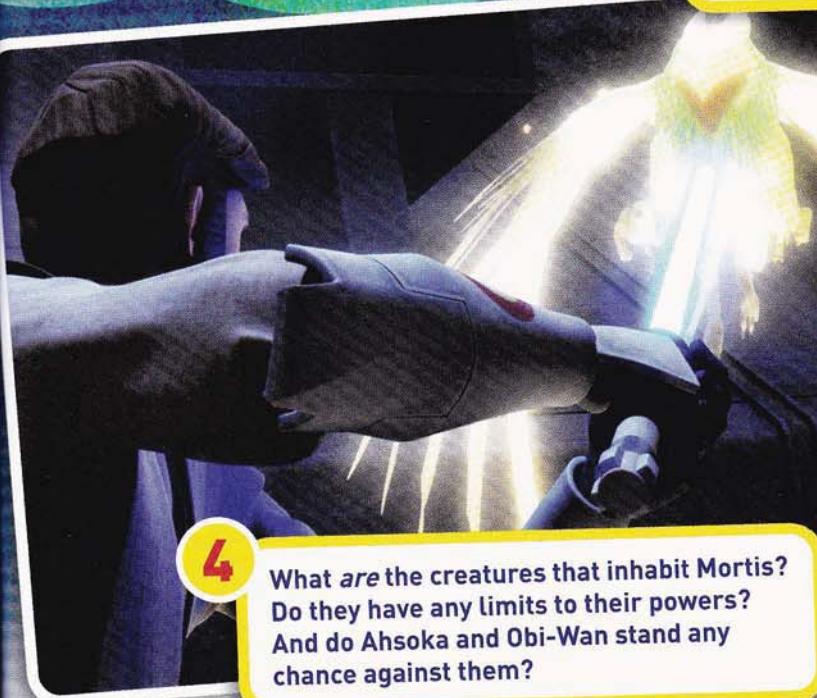
# A PLACE LIKE NO OTHER!



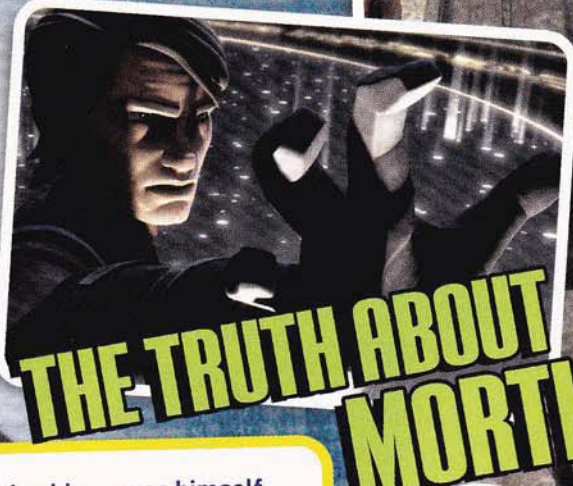
**3** The weather and foliage on Mortis change in seconds, reflecting which of the two aspects of the Force is stronger at that time! Plants blossom in an eyeblink, and die off just as quickly.



# SON AND DAUGHTER REVEAL THEIR TRUE FORMS!



**4** What are the creatures that inhabit Mortis? Do they have any limits to their powers? And do Ahsoka and Obi-Wan stand any chance against them?



# THE TRUTH ABOUT MORTIS!

**5** After Anakin proves himself worthy, The Father reveals the true nature of Mortis – a world removed from all others, where impossibly-powerful Force wielders can be controlled by creating a fragile balance.



IT IS ONLY HERE I CAN CONTROL THEM...

A FAMILY IN BALANCE. THE LIGHT AND THE DARK. DAY WITH NIGHT. DESTRUCTION REPLACED BY CREATION.



7K7M 7M NE1YV7, 7E1N  
 N7D7V 717 7 7K7M, 7K7M  
 7D7M, 7D7M 7D7M 7D7M  
 7D7M 7K7M 7K7M  
 7D7M 7E7M 7E7M 7E7M 7E7M  
 7D7M 7E7M, 7E7M 7E7M  
 7D7M 7E7M, 7E7M 7E7M